



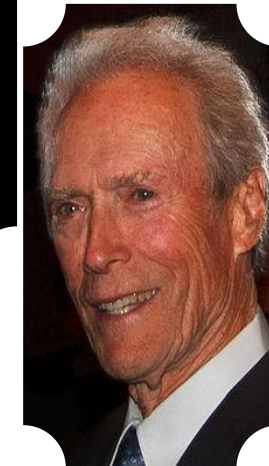
WORKPLACE Diversity & Inclusion

Lisa Johnson, RN, BSN, CDP
SCHRA 2018 Diversity Chair

The logo for Trivium features the word "Trivium" in a stylized, rounded font. The letters "T", "r", "i", "v", and "i" are white with a red outline. The letter "m" is yellow with a red outline. The letter "a" is white with a red outline. The text is set against a blue, semi-circular background that resembles a globe or a stylized letter "D".

Trivium

Disabled Employee



Age 84



Lesbian Couple



Bilingual Families



Disabled Employee

Different types of impairment groups make up the largest minority group today at 15 percent of the U.S. population.

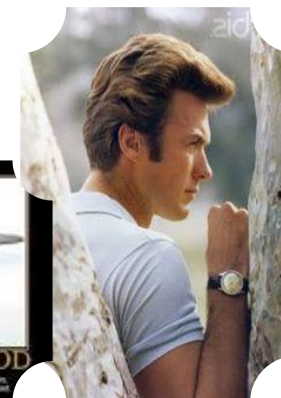


Lesbian Couple

An estimated 2 to 10 percent of the population is gay/lesbian.


1995 and 2025, the number of elderly is projected to double in 21 states.

Age 75



One in every 7 Americans speaks a language other than English at home.





I **N** **V** **O** **L** **V** **E** **D**
T

The word "INVOLVED" is rendered in large, 3D block letters. The letter 'I' is on a green block, and the letter 'G' is on a green block positioned above the 'V' and 'E'. The letter 'T' is on a white block positioned below the 'E' and 'D'. The other letters (N, V, O, L, V, E, D) are on white blocks.

Lisa Johnson, RN, BSN, CDP
Diversity & Inclusion Director
Employee Relations
Human Resources Department
Aultman Health Foundation
330-363-2032; lisa.Johnson@Aultman.com